

DLD 3636 XR

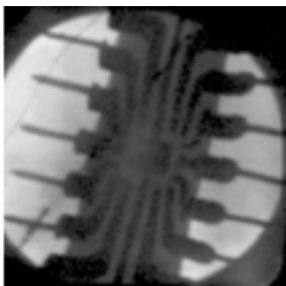


Delayline Detector with polyimid window for time resolved X-ray imaging

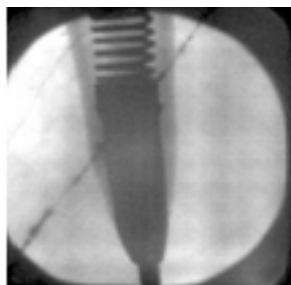
Features

- 2D detector with polyimid window for X-ray detection
- 36 x 36 mm² active area of DLD body and \varnothing 40 mm active MCP area
- Contrast enhancement by time selection via time histogramming

- For further information contact Surface Concept GmbH



chip



ballpen

Contrast enhancement of X-ray images by time selection

